

# What is Stormwater & Why is it a Problem?

Stormwater is water from rain or melting snow that does not soak into the ground and eventually runs off into local water ways. Usually this water is coming off our roofs, driveways, roads and parking lots. This becomes a problem when stormwater runoff collects pollutants like pet waste, sand, salt, pesticides, fertilizers, oil, grease, and much more as it runs along our streets and ditches. Then it washes all of those pollutants into our local streams and lakes.



## What Can YOU Do To Prevent Stormwater Pollution?

### General Household:

Whenever possible, use nontoxic, biodegradable and recyclable products.

Do not dispose of chemicals in household drains or stormdrains.



### Paints and Solvents:

Water based paint is best, but when using oil based paint, dispose of properly, not down the sink drain or at the curb.



### Automotive:

Check your car for oil leaks regularly. Recycle used motor oil and never dump it down a stormdrain.

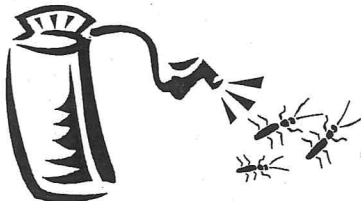


When washing your car place it over a grassy area so the ground can filter the soapy water naturally. Or go to a car wash.

### Lawn and Garden:

Use pesticides and fertilizers sparingly and never apply before a rain storm.

Dispose of all chemicals safely and properly.



### Pet Care:

Scooping it up and flushing it down the toilet is the best way to stop pet waste from contaminating our local water supply.



## What Are The Benefits of Clean Stormwater?

Municipalities can lower the cost to treat drinking water. Stormwater management also reduces of the number and severity of floods and property damage. Property values can go up. The public can enjoy safer and cleaner beaches and recreational opportunities such as swimming and fishing.